
THE LYNN R. LOWREY ARBORETUM

of Rice University

NEWSLETTER

FALL 2006

Arboretum Project Highlight: Research Greenhouses

Construction on the new research greenhouses for the Rice University Ecology and Evolutionary Biology department has been completed. The greenhouse facilities contain five independent modules, each containing a programmable automatic watering and fertilization system.



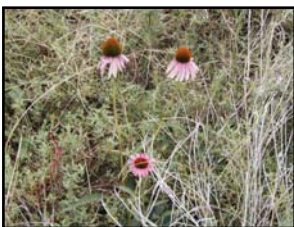
These greenhouses are an important addition to the well-equipped research areas that are already housed in the adjacent modern facilities that include state-of-the-art laboratories.

The greenhouse complex will house a variety of research projects, from experiments examining the genetics and ecology of invasive plants to studies probing the intricacies of plant-fungus cooperation. In addition, the greenhouse will host a “teaching collection” of native and exotic herbs, shrubs, and vines for use in undergraduate botany and ecology classes.



More Wildflowers!

Wildflowers bloomed nicely this Fall in the Wiess drainage ditch, thanks to our Spring wildflower volunteers. Volunteers added more seed to the Harris Gully area, the open hill by Reckling Park, and the drainage ditch between Wiess College and the intramural fields. The planting took place in late



October in conjunction with the Environmental Awareness Week organized by the Rice Student volunteer Program's Environmental Committee.

Architect David Rodd Speaks to Committee

At this Fall's first Arboretum Committee meeting, Rice University Architect, David Rodd, presented the masterplan study produced by Michael Graves and Associates. He also briefed the committee on upcoming construction activities. Together, Facilities Engineering and Planning and the Arboretum Committee are working to facilitate collaboration in selection of plant materials for the landscaping of new projects that will enhance our mission of increasing the number and diversity of native plants on campus.



Arboretum Projects: Main Street Project

The Lynn R. Lowrey Arboretum's next project will involve a trial planting of landscaper Mike Anderson's design to create a softer, more varied edge to the Rice University campus. Plants anticipated for the landscaping include cardamon ginger, lace ferns, aralia, chinese mahonia, and viburnum.

Brown College Pinelands

Plans for additional projects are also being discussed. Near the top of our list is a viburnum collection, possibly to be placed in an area behind Brown College along Sunset Blvd. Viburnums are highly regarded by horticulturists, but are not widely used in Houston. The focus will be on natives, including possum haw (*V. nudum*), arrowwood (*V. dentatum*) and rusty blackhaw (*V. rufidulum*), but horticulturally and ecologically interesting non-natives will be included as well.



Arboretum Project Updates: Botany Garden

After a summer of nearby construction, the Botany Garden has been spruced up for Fall. The Mexican Orchid Tree (*Bauhinia mexicana*) and the Gulf Muhly (*Muhlenbergia capillaris*) have been the stars of the show. Do stop by and admire it.

Wiess Grove

Grasses are flowering in the Wiess Grove, too. We had excellent survival on the plantings, so things should be in good shape for a dedication ceremony being planned for early November. Watch our website for details. By then we hope to also have a bench to install in the grove in recognition of contributions of James II and Margaret Elkins and the Wiess family to Rice. The ceremony will serve as both a dedication and an introduction to the completed project for the Rice community.

Liddell Garden

The Lynn R. Lowrey Arboretum is currently seeking donations to make the birdbath feature, designed by Senior Architecture student Sarah Simpson, a reality. If you are interested in making a donation to the Arboretum or to a specific Arboretum project, please read the form included below.



About the Lowrey Arboretum

The Lynn R. Lowrey Arboretum is a teaching and research resource of Rice University. An outdoor classroom spanning the Rice campus, it serves programs from biology to engineering to architecture to literature to interdisciplinary studies on the environment. Dedicated on March 18, 1999, the arboretum honors the distinguished horticulturist whose life and work were devoted to spreading knowledge and appreciation for the trees and plants of the Gulf Coast of the United States and northern Mexico. The Lowrey Arboretum Collection is a set of woody plants that represents native and introduced species suitable to the soils and climate of the Houston area. At present, the arboretum collection numbers 84 specimens, representing 76 species catalogued on the Rice grounds. Across campus,

some 4,605 trees and shrubs have been recorded of 128 different species.



Friends of the Lowrey Arboretum (GM20)

The Lowrey Arboretum impacts the lives of Rice students, visitors to our campus, and the beauty of our Rice neighborhood. Gifts to the Lowrey Arboretum Fund help to expand our role as a resource for Rice and the city of Houston. With your financial support we can facilitate research and educational opportunities, catalog and document the growth of our trees, increase the size of the arboretum collection and positively influence air quality.

Yes, I would like to support the Lowrey Arboretum with a gift of
___\$1,000 ___\$500 ___\$250 ___\$100 \$____.Other

Yes, I would like to support the Lowrey Arboretum with a pledge of \$
_____ to be paid within five years (*minimum \$2,500*).

(Please print)

Name: _____

Street Address: _____

City, State ZIP _____

Mail to: Lowrey Arboretum
P.O. Box 200175
Houston, TX 77216-0175

Or make a gift online at
<http://giving.rice.edu>

Payment is by: Check (*payable to Rice University*)

Credit card: MasterCard VISA American Express

Amount to be charged: \$_____ (minimum \$10)

(name as it appears on credit card)

Account number

Expiration Date

Billing Address (if different from address on left)

Signature: _____