

---

# THE LYNN R. LOWREY ARBORETUM

*of Rice University*

---

## NEWSLETTER

SPRING 2005

---

### About the Lowrey Arboretum

The Lynn R. Lowrey Arboretum is a teaching and research resource of Rice University. An outdoor classroom consisting of native and introduced species of plants spanning the Rice campus, the Arboretum serves educational programs in biology, engineering, architecture, literature and interdisciplinary studies on the environment. The Arboretum honors the distinguished horticulturist whose life and work were devoted to spreading knowledge and appreciation of the trees and plants of the Gulf Coast of the United States and northern Mexico.



### Arboretum Committee Welcomes New Members

The Arboretum Committee welcomed three new members at the March Committee meeting. Albert Kidd has joined the Committee as a representative from the Board of Trustees Building and Grounds Committee. In this position, Mr. Kidd will serve as a liaison between the Committee and the Board.

William Niendorff joined the committee as the student representative. William is a Rice University freshman from Brown College. As the student representative, William will provide the Committee with insights into student needs and priorities.

Ann Ratliff, Director of Development for Science and Engineering, joined the Committee as well. Ms. Ratliff will advise the Committee in fundraising for Arboretum programs.

The Committee looks forward to working with our new members to advance the goals of the Lowrey Arboretum.

### Whack the Hedges

On February 19, the Arboretum Committee and the Facilities, Engineering and Planning Department hosted an opportunity for students, faculty and staff to help beautify the Rice campus. Volunteers pruned hedges along Greenbriar Street and planted a new species of hedge near the corner of Rice Boulevard.



### Arbor Day Celebration

The Houston Federation of Garden Clubs celebrated Arbor Day with the Lowrey Arboretum in February. Arboretum Committee member Charles Tapley spoke to the group about the Arboretum. Lisa Mann, an Ecology graduate student at Rice University, gave the attendees a tour of the Arboretum's botany garden, a gift from the Federation in 2004. The Federation and the Far Corners Garden Study Club then presented the Arboretum with a Two-Winged Silver Bell Tree, which has been planted near Anderson Bio Labs.



### Wiess College Project

The Lowrey Arboretum has undertaken a project to landscape an area south of Wiess College. In December, the Board of Trustees approved the Lowrey Arboretum's plan to transform the south lawn outside of Wiess into a grove of native Texas trees chosen for their use in teaching students about plant identification. Species of pine, oak, magnolia and other trees will mingle among hollies along the lawn, providing shade for dorm rooms and softening the view of Wiess from Main Street. Spaces along the grove will be left unplanted to allow for future installation of benches in the area as requested by students. Plans for the grove are currently being finalized. Plantings will begin this fall.

## Gift from Lowrey Finds Refuge at Rice



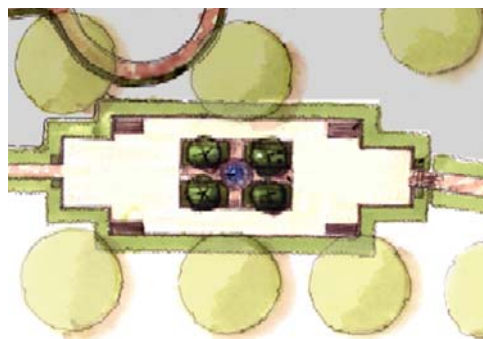
The Lowrey Arboretum recently acquired an arborescent palmetto with an intriguing history involving

Lynn Lowrey. In the early 1980s, Arboretum Committee member Charles Tapley admired a seedling palmetto in Lowrey's nursery. Lowrey had collected the seed from a well-known population in Brazoria County which he had helped protect. Botanists were uncertain as to whether the tree was a rare form of the common dwarf palmetto (*Sabal minor*), a disjunct population of the Rio Grande Palmetto (*Sabal texana*), or a distinct species (*Sabal louisianus*) that arose as a hybrid between the first two. The palm lived in a corner of the parking lot by Mr. Tapley's office until recently when he donated it to the Lowrey Arboretum. Davey Tree Service contributed its services in transplanting the palm. It doesn't look very happy at the moment, but we are delighted to see that new fronds are emerging.

## Liddell Garden

The Lowrey Arboretum is finalizing plans for the Liddell Garden. Named in honor of Alice Staub Liddell, the garden will be located next to the O'Connor House (formerly the president's house). The garden will feature plants from Mrs. Liddell's personal garden and a birdbath will occupy the center of the garden.

Mrs. Liddell graduated from Rice Institute in 1949, after which she became an avid gardener and president of the Garden Club of Houston. She was well known both for her own garden and for gardens she designed for others. Her husband Frank Liddell and family friends have generously supported the installation of this garden, which is scheduled for completion Summer 2005.



### Friends of the Lowrey Arboretum (GM20)

The arboretum was created as a result of fundraising spearheaded by architect and landscape architect Charles Tapley (Class of 1960) and Lowrey family members Patsy and Mike Anderson. To date, almost \$500,000 has been raised for the arboretum to support the acquisition and care of species. Your continued support of the Arboretum ensures we can care for the arboretum collection and increase its size. Please consider joining us as a Friend of the Lowrey Arboretum or renewing your commitment this year. If you know others who would like to become friends of the arboretum, please call us for additional newsletters or to add addresses to our mailing list. Thank you.

Yes, I would like to support the Lowrey Arboretum with a gift of \$ \_\_\_\_\_.

Yes, I would like to support the Lowrey Arboretum with a pledge of \$ \_\_\_\_\_ to be paid within five years (minimum \$250).

*(Please print)*

\_\_\_\_\_  
Name

\_\_\_\_\_  
Street address

\_\_\_\_\_  
City, state ZIP

**Mail completed form to:**

Office of Development

P.O. Box 200175

Houston, TX 77216-0175

Payment is by:  Check (*payable to Rice University*)

Credit card:  VISA  MasterCard  American Express

Amount to be charged: \$ \_\_\_\_\_ (minimum \$10)

\_\_\_\_\_  
*Name (as it appears on credit card)*

\_\_\_\_\_  
*Account number*

\_\_\_\_\_  
*Expiration date*

\_\_\_\_\_  
*Billing address (if different from address on left)*

\_\_\_\_\_  
*Signature*