
THE LYNN R. LOWREY ARBORETUM

of Rice University

NEWSLETTER

WINTER 2004

About the Lowrey Arboretum

The Lynn R. Lowrey Arboretum is a teaching and research resource of Rice University. An outdoor classroom spanning the Rice campus, it serves programs from biology to engineering to architecture to literature to interdisciplinary studies on the environment. Dedicated on March 18, 1999, the arboretum honors the distinguished horticulturist whose life and work were devoted to spreading knowledge and appreciation for the trees and plants of the Gulf Coast of the United States and northern Mexico.

The Lowrey Arboretum Collection is a set of woody plants that represents native and introduced species suitable to the soils and climate of the Houston area. At present, it numbers 93 specimens that have been selected representing the 79 species catalogued on the Rice campus. Students in BIOS 336: Plant Diversity have mapped approximately 4,802 woody plants.



Arboretum Planning Committee

The Arboretum Planning Committee is meeting on a regular basis. This committee was formed to facilitate development of the arboretum. Chaired by the Director of Project Management and Planning, Barbara White, the committee makes recommendations for plantings, activities, and events connected with the Lowrey Arboretum. Other responsibilities of the committee include maintaining records of the sources and fates of trees designated as part of the Arboretum Collection and producing educational materials about the arboretum.



Lowrey Arboretum Website Launched

You can now find the arboretum online at <http://arboretum.rice.edu/>. Rice University's Web Services created the design for the website. The Arboretum Planning Committee will oversee the maintenance of the website, which provides information about the history of the arboretum, teaching, and research projects associated with the arboretum, and the arboretum collections. We welcome your suggestions for making this a more informative website.



Arbor Day Celebration on January 12, 2004

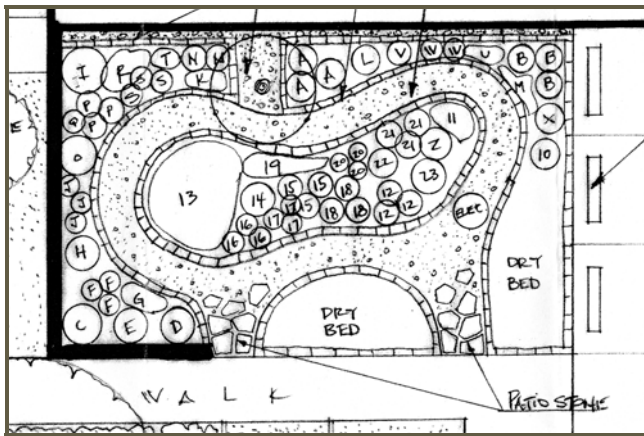
The Lowrey Arboretum hosted an Arbor Day celebration on January 12, 2004. The event was held to celebrate the gift of a tree from the Houston Federation of Garden Clubs and Far Corners Garden Study Club. Charles Tapley, who spearheaded the fund drive to establish the arboretum, and Dr. Paul Harcombe, professor of Ecology and Evolutionary Biology, gave brief presentations about the arboretum. Betty Gerber of the Houston Federation of Garden Clubs, Betty Schoolar, Director of District IV of Texas Garden Clubs, Margarett Jones, President of Houston Federation of Garden Clubs, and Virginia Woods, President of Far Corners Garden Study, Club also gave presentations. Thomas Conroy, Shepherd School of Music, provided music. Guests included members of the garden clubs, relatives of Lynn Lowrey, and several Friends of the Arboretum.



Plans for Botany Garden Approved

The Arboretum Planning Committee approved plans for a botany garden. Funding for the botany garden is being sought by the District IV, Texas Chapter, National Garden Clubs. The garden will act as a living laboratory for students in botany classes by providing them with the opportunity to see and study the plants they have previously seen only in textbooks. The botany garden will include plants that are particularly useful in teaching students about plant classification, such as the Florida anise; dry land plants, such as Cactaceae and Agavaceae; wetland plants, such as sedges, rushes, and arrowheads; and spring-flowering perennials, weeds, and wildflowers. The garden will be located between the Keith-Wiess Geological Labs and Anderson Biological Labs.

PLAN FOR BOTANY GARDEN



Arboretum Project Highlight: Harris Gully Natural Area

A remnant of a riparian woodland on the banks of Harris Gully, the Harris Gully Natural Area is an ongoing project of students in BIOS 316: Plant Diversity and other courses. Wildflower seeds were sown by students in UNIV 111 and the Environmental Club in 1999, 2002, and 2003. Students use Harris Gully Natural Area to study the plant communities of this natural stand of trees on the Rice campus. Through plantings of native grasses, wildflowers, trees, and shrubs, the natural area is intended to be a replica of a natural system once widespread in the Houston area.



Noteworthy 2003 Accessions (Gift from Patsy and Mike Anderson)

Harris Gully Natural Area:

- Shagbark hickory (*Carya ovata*)
- Bitternut hickory (*Carya cordiformis*)
- Mockernut hickory (*Carya alba* = *C. tomentosa*)

Anderson Biological Laboratories:

- Louisiana palmetto

Wiess College:

- Southern sugar maple (*Acer barbatum*)

Friends of the Lowrey Arboretum (GM20)

The arboretum was created as a result of a fundraising effort spearheaded by Charles Tapley (Class of 1960), architect and landscape architect, and Patsy and Mike Anderson, Lowrey family members. To date, more than \$500,000 has been raised for the arboretum. If you would like to help support the Arboretum, please consider becoming a friend of the Lowrey Arboretum. Your support will help us care for the arboretum species, document their growth, and increase the size of the arboretum collection.

Yes, I would like to support the Lowrey Arboretum with a gift of \$_____.

Yes, I would like to support the Lowrey Arboretum with a pledge of \$_____ to be paid within five years (minimum \$250).

(Please print)

Name

Street address

City, state ZIP

Mail completed form to:

Office of Development

P.O. Box 200175

Houston, TX 77216-0175

Payment is by: ___ Check (*payable to Rice University*)

Credit card: ___ VISA ___ MasterCard ___ American Express

Amount to be charged: \$_____ (minimum \$10)

Name (as it appears on credit card)

Account number

Expiration date

Billing address (if different from address on left)

Signature